

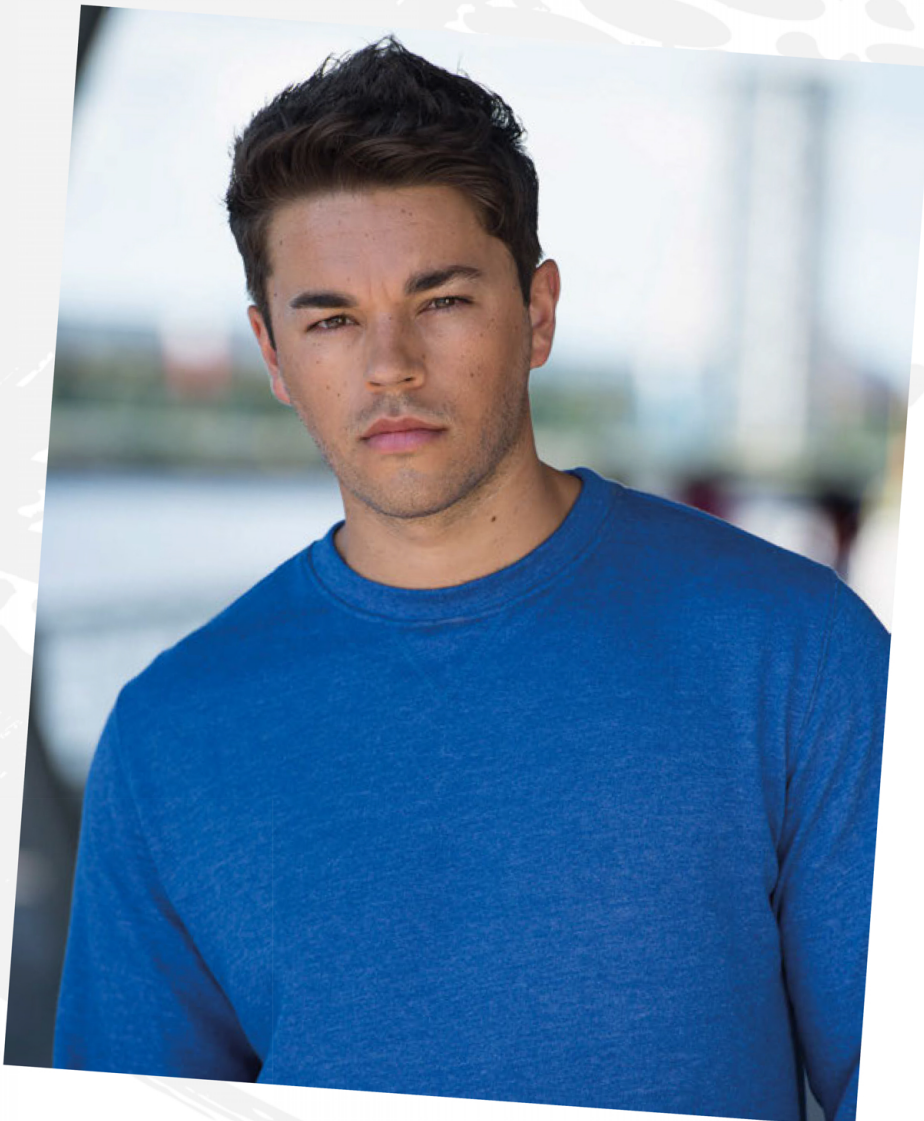
SHOWN (L-R)
GREY HEATHER
ROYAL HEATHER
RED HEATHER



JH040

Heather Sweat


S-XXL



This modern sweatshirt features our lightweight soft feel fabric for a casual look and is fashioned with a stitched V detail at the neck.

 **52% RINGSPUN COTTON**
48% POLYESTER

 **225GSM**
LIGHTWEIGHT FABRIC

 **KEY FEATURES**
SLIM FIT
SOFT FEEL FABRIC
STITCHED V DETAIL AT NECK

 AVAILABLE IN
WOMEN'S SIZES
See pg46